

Insulation Resistance Tester comparative chart

Display Type	DIGITAL						
Model	DG6	DG7	DG8	DG9	DG525	DG251	M53
Category	-	-	-	-	-	-	-
CE	-	-	-	-	-	-	-
Test voltage range	2	2	2	2	2	2	2
Insulation resistance	25V/4M 40M	50V/4M 40M	50V/4M 40M	125V/40M 400M	500V/2000M	250V/2000M	500V/200M
Rated voltage / Maximum scale value	15V/4M 40M	25V/4M 40M	15V/4M 40M	50V/4M 40M	250V/2000M	125V/2000M	15V/20M
ACV V	-	-	-	-	600	600	750
DCV V	-	-	-	-	-	-	750
Discharge	-	-	-	-	-	-	-
Backlight	-	-	-	-	-	-	-
Inner battery check	-	-	-	-	-	-	-
Meter structure	-	-	-	-	-	-	-
Data hold	-	-	-	-	-	-	-
Auto power save	-	-	-	-	-	-	-
Auto power off	-	-	-	-	-	-	-
Dimension H mm	117	117	117	117	175	175	175
Dimension W mm	76	76	76	76	115	115	115
Dimension D mm	18	18	18	18	55	55	55
Weight g	125	125	125	125	600	600	600

Display Type	ANALOG						
Model	DM1528S	DM5218S	DM1008S	DM508S	PDM508S	DM-1527	DM-5257
Category	CAT. 600V	CAT. 600V	CAT. 600V	CAT. 600V	CAT. 600V	-	-
CE	-	-	-	-	-	-	-
Test voltage range	3	3	1	1	1	3	3
Insulation resistance	1000V/2000M	500V/1000M	1000V/2000M	500V/1000M	500V/100M	1000V/2000M	500V/1000M
Rated voltage / Maximum scale value	500V/1000M	250V/500M	-	-	-	500V/1000M	250V/500M
	250V/500M	125V/200M	-	-	-	250V/500M	100V/200M
ACV V	600	600	600	600	600	600	600
DCV V	60	60	60	60	60	-	-
Discharge	-	-	-	-	-	-	-
Backlight	-	-	-	-	-	-	-
Inner battery check	-	-	-	-	-	-	-
Meter structure	BAND	BAND	BAND	BAND	BAND	BAND	BAND
Data hold	-	-	-	-	-	-	-
Auto power save	-	-	-	-	-	-	-
Auto power off	-	-	-	-	-	-	-
Dimension H mm	144	144	144	144	144	175	175
Dimension W mm	99	99	99	99	99	118	118
Dimension D mm	43	43	43	43	43	55	55
Weight g	310	310	310	310	310	520	520

Analog Multitester comparative chart

Model	EM7000	CX506a	YX-361TR	SH-88TR	AU-32	AU-31	YX360TRF	SP21
Category	CAT. 600V	CAT. 600V	-	-	-	-	CAT. 600V	CAT. 600V
CE	-	-	-	-	-	-	-	-
DCV V	0.3	120m	0.1	120m	250m	300m	0.1	0.3
	1.2	3	0.5	3	2.5	3	0.25	3
	3	12	2.5	12	10	12	2.5	12
	12	30	10	30	50	60	10	30
	30	120	50	120	250	300	50	120
	120	300	250	300	500	1000	250	600
	300	1000	1000	1200	-	-	1000	-
	1000	-	-	-	-	-	-	-
ACV V	3	3	2.5	3	250m	300m	10	12
	12	12	10	12	2.5	3	50	30
	30	30	50	30	10	12	250	120
	120	120	250	120	50	60	750	300
	300	300	1000	300	250	300	-	600
	750	750	-	1200	500	1000	-	-
DCA A	0.12	30	50	50	250	300m	50	60
	0.3m	0.3m	2.5m	3m	2.5m	3	2.5m	30m
	3m	3m	25m	30m	25m	-	25m	0.3
	30m	30m	0.25	0.3	250m	-	0.25	-
	300m	0.3	-	-	2.5	-	-	-
	6	-	-	-	-	-	-	-
ACA A	6	-	-	-	250	300m	-	-
	-	-	-	-	2.5m	3	-	-
	-	-	-	-	25m	-	-	-
	-	-	-	-	250m	-	-	-
	-	-	-	-	2.5	-	-	-
Resistance	2k	5k	2k	3k	20k	20k	2k	2k
	20k	50k	20k	30k	200k	200k	20k	20k
	200k	500k	200k	300k	2M	2M	200k	2M
	2M	5M	2M	3M	20M	20M	2M	-
	20M	50M	20M	30M	200M	200M	200M	-
	200M	-	-	-	-	-	-	-
Capacitance F	-	0.2	-	1000	-	-	10	500
	-	20	-	0.01	-	-	-	-
	-	2000	-	0.1	-	-	-	-
	-	-	-	1	-	-	-	-
Auto range	-	-	-	-	-	-	-	-
Low frequency output measurement	-	-	-	-	-	-	-	-
Continuity	-	-	LED	LED	-	-	-	BUZZER
Battery check	-	-	1.5V	-	-	-	-	1.5V
Auto polarity	-	-	-	-	-	-	-	-
Meter structure	BAND	BAND	PIVOT	PIVOT	PIVOT	PIVOT	BAND	BAND
Drop shock proof meter	-	-	-	-	-	-	-	-
Zero center meter	-	-	-	-	-	-	-	-
Temperature measurement	-	-	-	-	-	-	-	-
Protection circuit for power line	-	-	-	-	-	-	-	-
hFE	-	-	-	-	-	-	-	-
Dimension H mm	165	165	150	150	48	48	159.50	144
Dimension W mm	106	106	100	100	110	110	129	99
Dimension D mm	46	46	37	36	124	124	41.50	41
Weight g	375	370	290	280	290	290	320	270

Optional accessory is necessary.

Analog Multitester comparative chart

Model	SP20	SP-18D	TA55	CP-7D	AP33	PW100Fb	VS-100
Category	-	-	-	-	CAT. 300V	-	-
CE	-	-	-	-	-	-	-
DCV V	0.25 2.5 5 10 50 100 500	0.3 3 12 30 120 600 -	0.3 3 16 30 60 -	0.25 2.5 10 50 250 500 -	10 50 250 500 -	0.1 1 5 50 250 750 -	10 50 250 500 -
ACV V	10 50 250 500 -	12 30 120 300 600 -	30 120 300 -	10 50 250 500 -	50 250 500 -	6 30 300 600 -	10 50 250 500 -
DCA A	50 2.5m 25m 0.25	60 30m 300m -	0.5 3 30 -	0.25m 25m 500m -	25m 250m -	- -	- -
ACA A	-	-	-	-	-	-	-
Resistance	2k 20k 200k 2M	2k 20k 200k 2M	2k 20k 200k 2M	2k 20k 1M -	5k 500k -	5k 500k 5M -	2k 20k 2M -
Capacitance F	500	1000	-	-	-	-	-
Auto range	-	-	-	-	-	-	-
Low frequency output measurement	-	-	-	-	-	-	-
Continuity	-	-	BUZZER	-	-	-	-
Battery check	1.5V	1.5V	12V	1.5V	1.5V/9V	-	-
Auto polarity	-	-	-	-	-	-	-
Meter structure	BAND	BAND	BAND	PIVOT	PIVOT	PIVOT	PIVOT
Drop shock proof meter	-	-	-	-	-	-	-
Zero center meter	-	-	-	-	-	-	-
Temperature measurement	-	-	-	-	-	-	-
Protection circuit for power line	-	-	-	-	-	-	-
hFE	-	-	-	-	-	-	-
Dimension H mm	144	159.5	142	119	126	150	144
Dimension W mm	99	129	97	85	87	100	96
Dimension D mm	41	41.5	38	23	30	36	56
Weight g	270	320	300	140	185	280	400

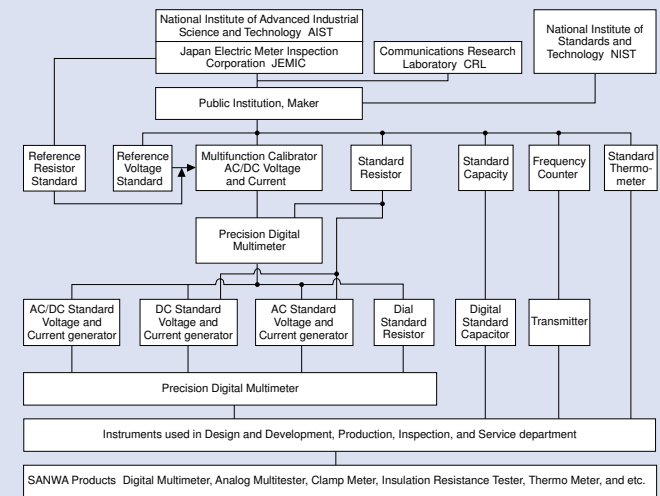
Optional accessory is necessary.

ISO 9001
Quality assurance



Traceability

Traceability Flow Chart



Repairs and servicing